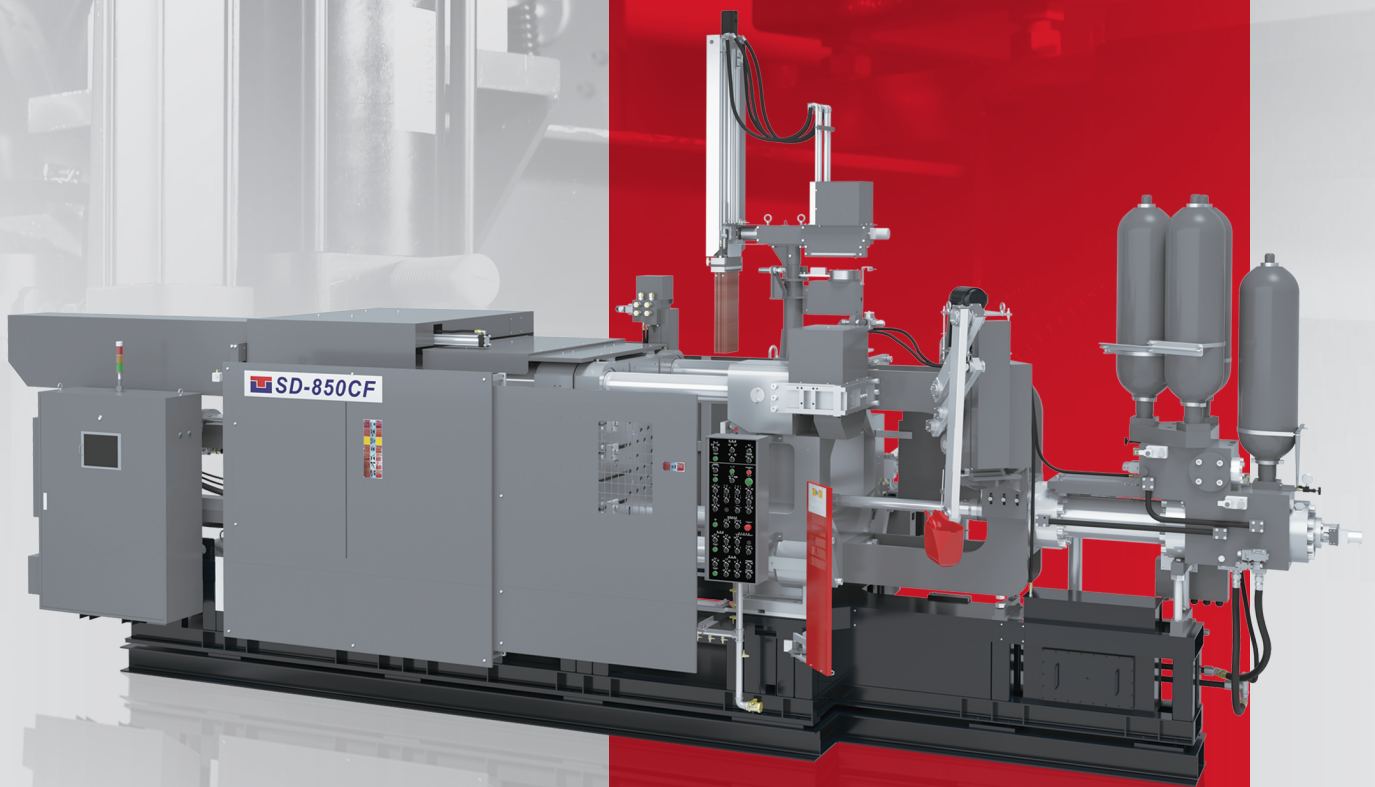


**INNOVATION
WITH
SIMPLICITY**



A NEW LOOK AND NEW VITALITY

ABOUT TBC

Within accumulation of experience and technology for 30 years, TBC moved to HoFa Industrial Park in order to have more space to manufacture and process machines. Until now, TBC service spots are based in India, Vietnam, Thailand, Saudi Arabia, and others. In the future, we are looking forward to developing machine models of more than 1,000 tons and more intelligent CH series model to satisfy customers' demand. We are confident to a brand new start with superior quality assurance.

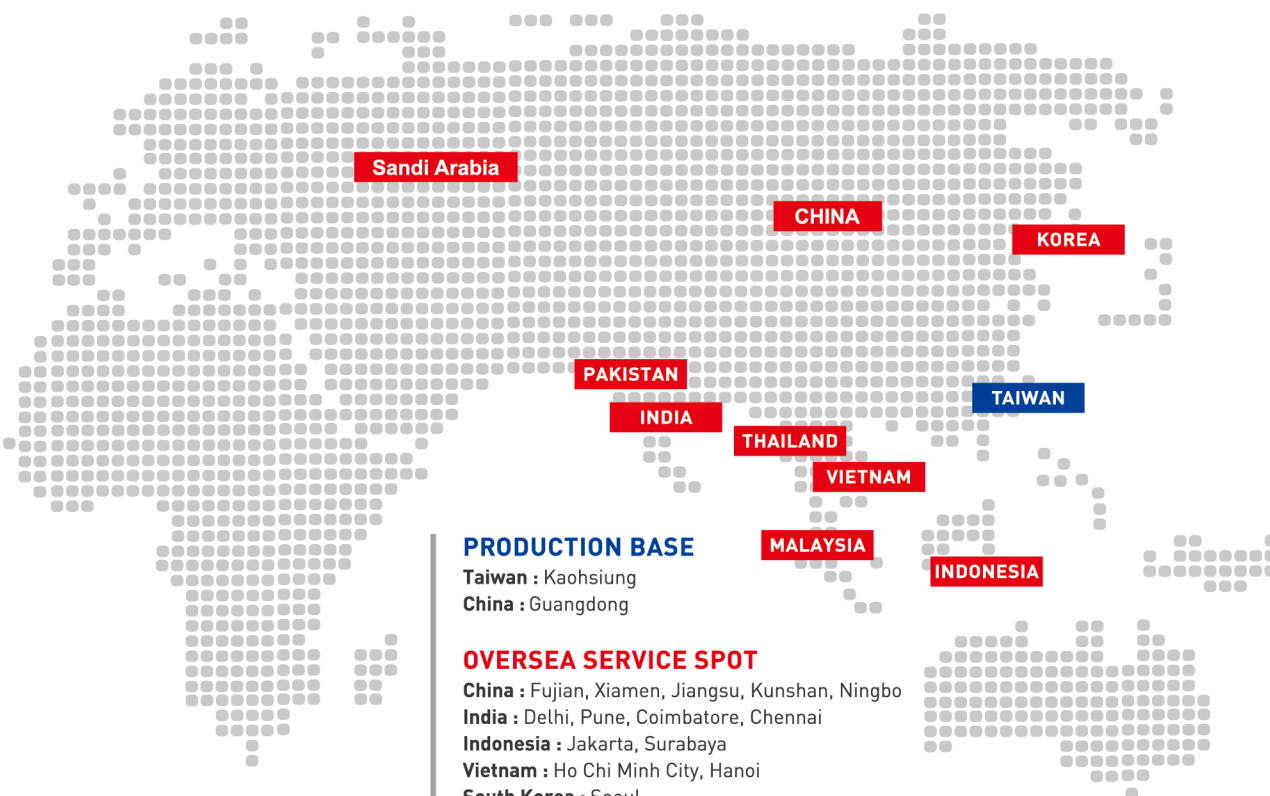


TBC New Factory



EXHIBITION

SERVICE SPOTS



PRODUCTION BASE

Taiwan : Kaohsiung
China : Guangdong

OVERSEA SERVICE SPOT

China : Fujian, Xiamen, Jiangsu, Kunshan, Ningbo
India : Delhi, Pune, Coimbatore, Chennai
Indonesia : Jakarta, Surabaya
Vietnam : Ho Chi Minh City, Hanoi
South Korea : Seoul
Malaysia: Kuala Lumpur
Thailand: Bangkok
Pakistan: Karachi

COMPANY PROFILE

THIS IS TBC-DIECAST, INNOVATION WITH SIMPLICITY

Professional Concept and Highly Experienced

Technology Base Corporation was established in 1987, specializing in production and management of peripheral equipment in the die casting industry. TBC focused on the refurbishment and overhauling of die casting equipment. However in 1993, TBC launched its own die casting machine. TBC's first generation machine was a cold chamber die cast machine. TBC's own brand was born. We are constantly challenging ourselves to make more from less without compromising on quality. Customer care is always our top priority.



Renewing and Improving

Having a technical co-operation with the Metal Industries Research and Development Center, TBC was the first die casting machine manufacturer in Taiwan with ISO9001 accreditation. We are continuously looking for new and better ways forward in research, innovation and personnel training. Finding solutions to seemingly impossible challenges is a source of inspiration to move on to the next challenge.



Valuing Every Individual Diverse Talents

TBC is a team, and as such, we value every individual diverse talents. Working together, with the same goals and direction has become the base for TBC to flourish and improve the quality of our products and service. We dare to push the envelope, to constantly improve ourselves.



An International Outlook and a Global Layout

TBC die casting machines upholds the ideals of stable performance, fine quality and reasonable pricing, which is of course deeply rooted in the minds of customers in the die casting industry field, made known to us after having many years of experience working alongside our customers. We have successfully entered the marketplace in China, India, Vietnam and others. We are actively extending our growth further into the international market to become a global player.



OUR STORY

CHRONICLE OF EVENTS

Technology Base Corporation established in the die casting industry. Specializing in the production and management of peripheral equipment.

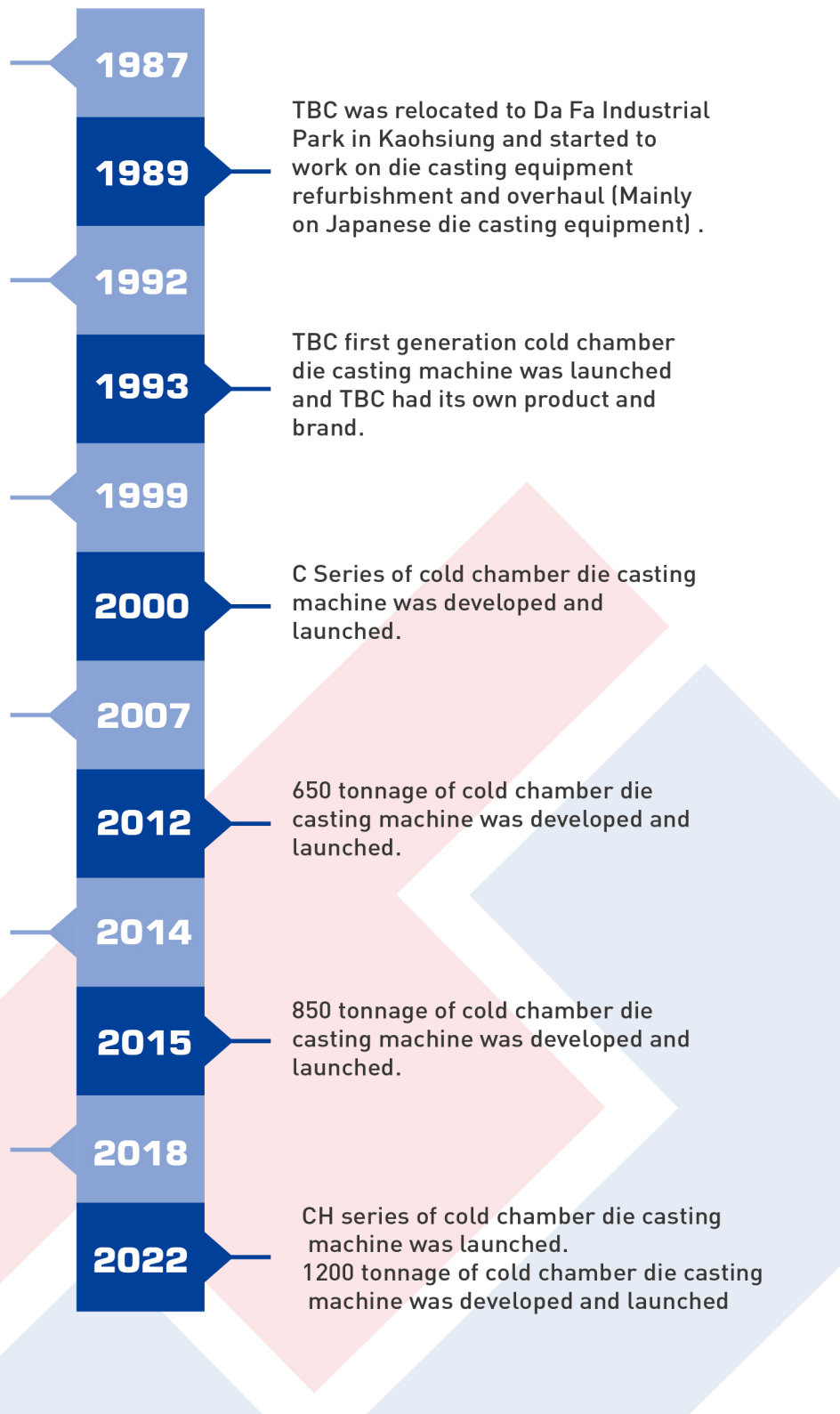
TBC began its technical co-operation with Metal Industries Research and Development Center, and began developing new types of cold chamber die casting machines.

TBC obtained ISO9001:1994

CE / CF Series of cold chamber die casting machine was developed and launched.

TBC first generation hot chamber die casting machine was launched and TBC had it's own product and brand.

TBC's new plant, located in HoFa Industrial Park is completed and begins operation.



SERVICE ITEMS

DIE CASTING EQUIPMENT

Cold Chamber Die Casting Machine 150-900 ton



- 1.CH/CF/CE series.
- 2.150-900 ton

Hot Chamber Die Casting Machine 75-250 ton



1. 75,130,190,250 ton
2. Auto Hydraulic Injection Position Adjustment.
3. Alternative to Gas furnace, Diesel furnace and Electric furnace.

Robot Integration



1. Spraying Robot
2. Extracting Robot
3. Extracting and Spraying (2 in 1) Robot

Auxiliaries



1. Ladler, Sprayer, Extractor
2. Auto Charging System
3. Vacuum System
4. Release Agent Dilutor

TOTAL SOLUTION FOR COLD CHAMBER DIE CASTING MACHINE



Extracting Robot

- Able to be integrated with casting inserts.
- If combined with stamping press/conveyor, improving production efficiency.
- Able to be integrated with Defective Casting Detector, automatically picking out bad castings.



Spraying Robot

- Specialized independent nozzle control for air and release agent.
- Able to adapt to hard to reach angles.
- Spraying parameter stored and is not required copper tubes.
- Able to extend storage space by USB.
- Reduce labor cost.



Release Agent Dilutor

PRODUCTION OPTIMIZATION HELP YOUR DIE CAST TURNKEY SOLUTION



Conveyor



Stamping Press



Auto Charging System (Aluminum/ Zinc)



Melting Furnace for Die Casting

- High melting efficiency and excellent heat preservation.
- Integrated with Furnace Temperature Display, giving alarm if temperature exceeding range of setting.

MODEL & SERIES

COLD CHAMBER DIE CASTING MACHINE / 280-900 ton

CH series	Performance	High Speed Injection	Acceleration
	METER-IN INJECTION SYSTEM	8 m/sec.	80 G

High-end INTELLIGENT MODEL



Energy Saving System: With German Eckerle pump and the whole new controlling system, extend the lifespan and durability.



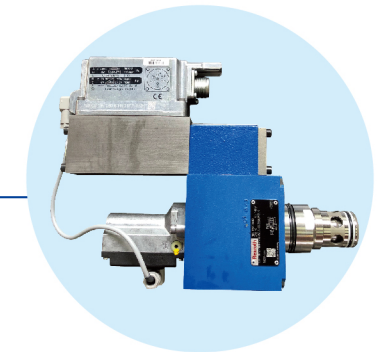
Remote Data Collection System: (Option): Remote monitoring and collection of production data. Simple through mobile phone or laptop.



High-end Auxiliaries: CH series is equipped with toggle-arm ladler, servo sprayer, and servo extractor, highly improving production efficiency and quality.



Dual Hydraulic System and Independent Intensification Accumulator: Owing to the separate ACC for intensification part, the pressure is not influenced by high speed. Moreover, operator can set up IP pressure independently. Suitable for 500 ton machine and above.



Meta-in Injection System: New hydraulic circuit design is capable to achieve a 80G acceleration and high speed to 8m/s. With German proportion solenoid valve, precisely controlling multi-phase for low speed and reduce casting porosity. higher stability for pressure resistant products and laminar flow die casting.



Advanced Data Management: Standard for die locking force display, abandoned cast setting, detection of defective, 500 sets of parameter storage.

MODEL & SERIES

COLD CHAMBER DIE CASTING MACHINE / 150-900 ton

CF

High Speed Injection

7

m/sec.

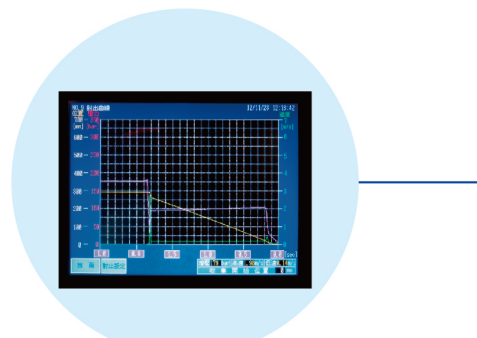
Acceleration

60

G

series

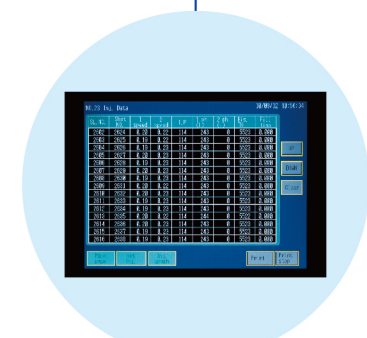
ADVANCED MODEL FOR HIGH PRODUCTIVITY



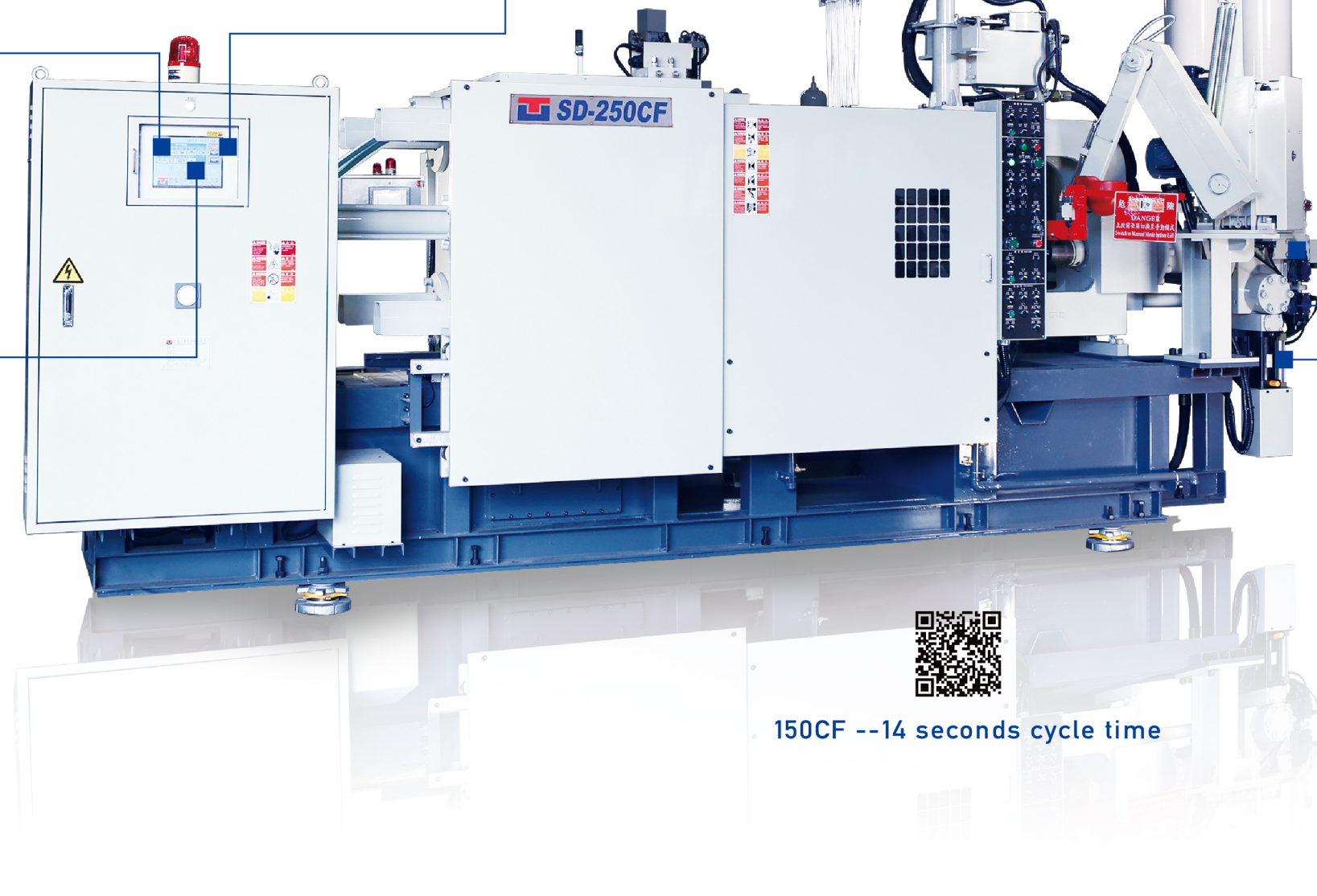
Smart QC System: Equipped with injection data display, injection diagram, defective detection, oil temperature sensor, oil level sensor (optional), die locking force display (optional).



Assist Production System: Standard for abandoned cast setting, display of injection valve and pressure, timer setting of core position, and shot condition calculation.



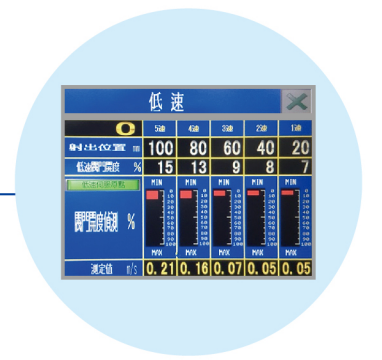
Data Storage: 3000 sets of injection data and 300 sets of casting parameters all stored and managed via USB.



Optional for Servo Sprayer: Adjustable for spraying stroke, providing better quality and atomization effect.



Dual ACC and Circuit Design (for 250 ton and above): Efficiently reducing the pressure drop, and providing superior reaction of refilling pressure. More stable in injection.



Multi-speed Injection System: Having 5 low speed setting. Eliminating air entrainment and molten metal flash. Effectively enhancing quality and able to lower porosity.



Back Pressure Relief Device: With unique hydraulic circuit design, acceleration from low to high speed taking only 0.012 seconds.

MODEL & SERIES

COLD CHAMBER DIE CASTING MACHINE / 150-730 ton

CE
series

High Speed Injection

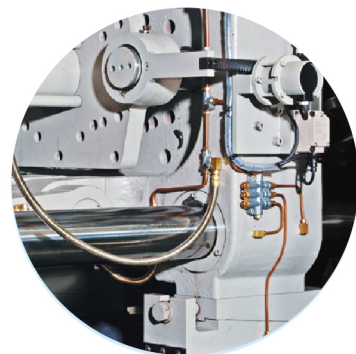
6

m/sec.

BETTER SOLUTION FOR COST REDUCTION



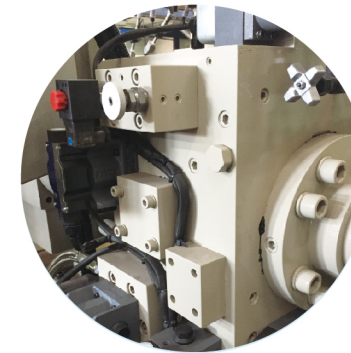
Auto Lubrication System: Quantitative apply lubrication, preventing toggle pins from locking.



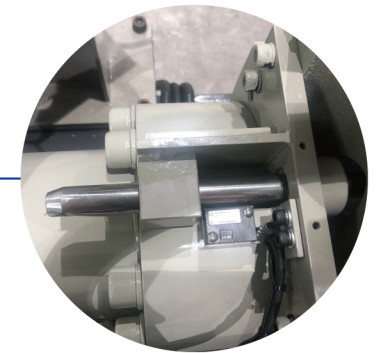
Adjustable Sliding Shoes: Easy to use and enhance the efficiency of platen adjustment.



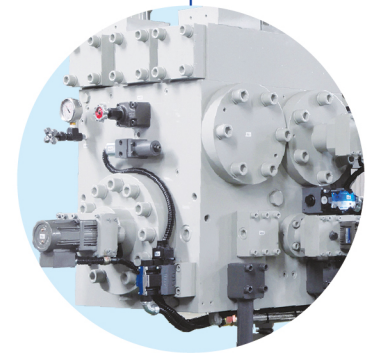
Omron HMI: Intuitive and ergonomics UI design for controller. 100 sets of parameter storage.



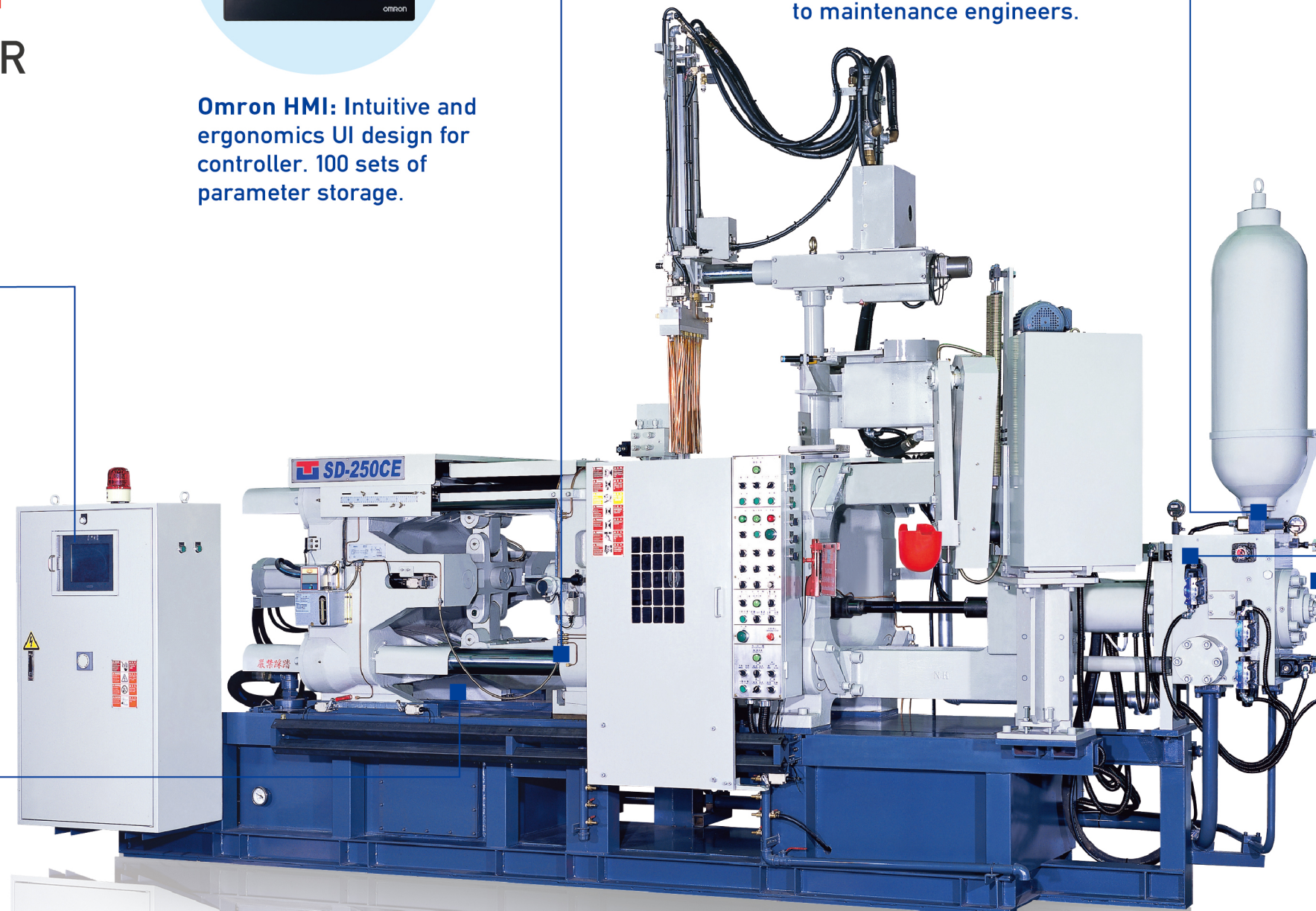
Auto Pressure Relief Device: When pumps stops, ACC pressure is automatically release to zero, eliminating any possible danger to maintenance engineers.



Non-contact Sensor: Simple and convenient settings for injection schedule. Having a unique cylinder injection circuit design. Speed can reach 6m/sec.



Injection Valve Setting: Injection valve directly controlled motor and encoder, setting up by HMI



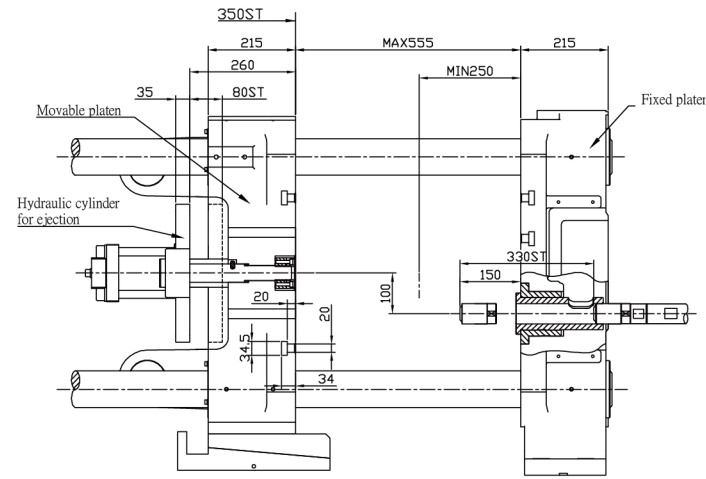
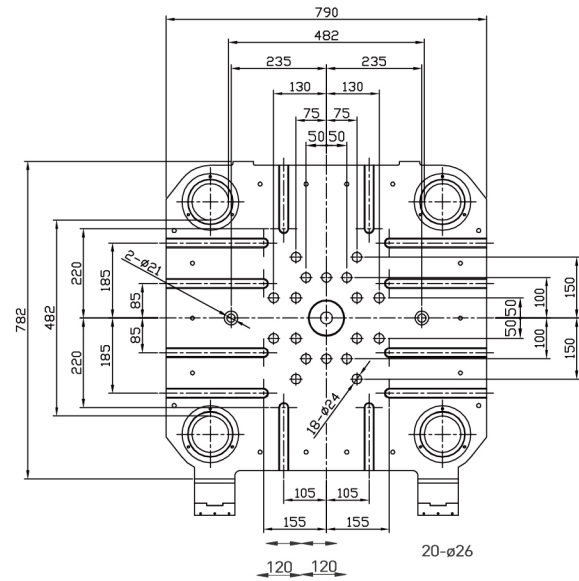
MACHINE SPECIFICATIONS

ITEM		150		180	280			420			580			730			900		
		CE / CF			CE / CF / CH			CE / CF / CH			CE / CF / CH			CE / CF / CH			CF / CH		
Die Locking Force	KN	1500		1800	2800			4200			5800			7300			9000		
Die Platen Dimensions (HxW)	mm	730 x 730		790 x 790	850 x 904			1010 x 1010			1090 x 1180			1230 x 1230			1400 x 1400		
Space between Tie Bars	mm	460 x 460		482 x 482	584 x 584			652 x 652			750 x 750			852 x 852			931 x 931		
Tie Bar Diameter	mm	90			110			125			150			160			190		
Die Stroke	mm	350			380			420			560			660			760		
Die Thickness	mm	250 ~ 500			250 ~ 600			300 ~ 700			350 ~ 850			350 ~ 900			400 ~ 950		
Solenoid Valve for Core	Piece	3/8" x 1		3/8" x 1	3/8" x 1		3/8" x 2		3/8" x 1		3/8" x 2		1/2" x 2		1/2" x 3		1/2" x 3		
Hydraulic Outlet	Set	1/2" x 2		1/2" x 2	1/2" x 2		1/2" x 3		1/2" x 2		1/2" x 3		3/4" x 3		3/4" x 5		3/4" x 5		
Injection Force	KN	182			265			354			506			550			653		
Plunger Stroke	mm	330			370			425			580			670			750		
Plunger-Tip Projection Distance	mm	150			150			165			250			300			350		
Injection Port Position	mm	-100			-125			-150			-175			-175			-250 or -275		
Dry Shot Speed	m/s	6	7		6	7	8	6	7	8	6	7	8	6	7	8	7	8	
Plunger-tip-Diameter	mm	Min.	Sta.	Max.	Min.	Sta.	Max.	Min.	Sta.	Max.	Min.	Sta.	Max.	Min.	Sta.	Max.	Min.	Sta.	Max.
		45	50	60	50	60	70	60	70	80	70	80	90	70	80	90	80	90	100
Maximum Casting Pressure	Mpa	110.2	88.9	61.7	132.8	92.3	67.7	109.9	80.6	61.7	117.7	90	71.1	140.5	107.7	85.1	130	102.8	83.1
Casting Area	cm²	133	165	238	184	265	361	312	425	555	416	544	688	462	604	764	653	826	1022
		207	257	370	287	413	563	485	661	864	624	816	1033	582	760	962	904	1144	1414
Actual Shot Weight	Kg	0.92	1.16	1.67	1.40	2.02	2.75	2.35	3.20	4.18	4.35	5.68	7.19	5	6.6	8.3	7.3	9.2	11.4
Ejection Force	KN	100.9			123.5			190.1			259.7			300			340		
Ejection Stroke	mm	80			80			100			110			125			125		
Hydraulic Motor	kw	15			18.5			22.5			37			37			45		
Amount of Hydraulic Fluid	L	360			370			480			700			800			860		
Amount of Cooling Water for Oil Cooling	L/min	25			25			25			80			80			150 ~ 180		
Amount of Cooling Water for Die Casting Cooling	L/min	25 ~ 50			25 ~ 50			25 ~ 50			50 ~ 90			50 ~ 90			150		
Machine Weight	ton	5			9.4			12.8			23			30			50		
Machine Size	mm	4820 x 1520 x 2585			5613 x 1650 x 2616			6275 x 1835 x 2975			7590 x 2065 x 3345			8046 x 2335 x 3413			9990 x 2450 x 3556		

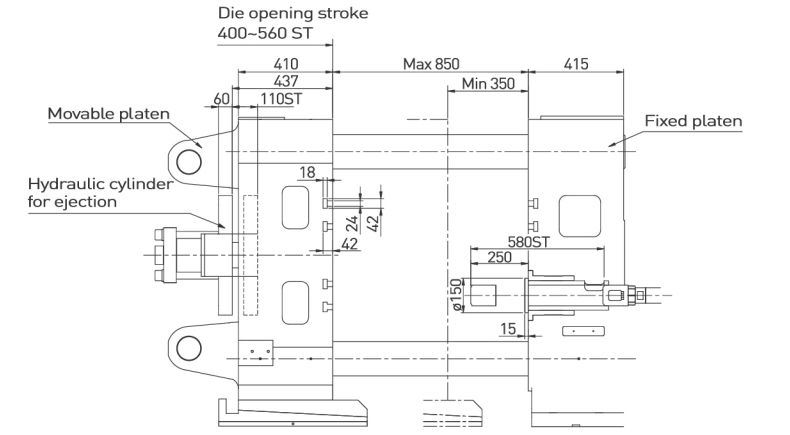
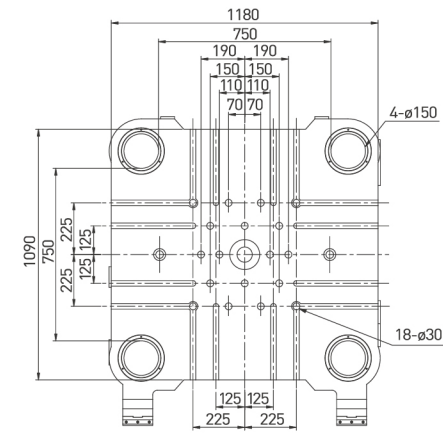
TBC reserves the right for adjustment of data.
 Specifications & contents are subject to change without further notice.
 All photos and contents are copyrighted by TBC.

PLATEN LAYOUT

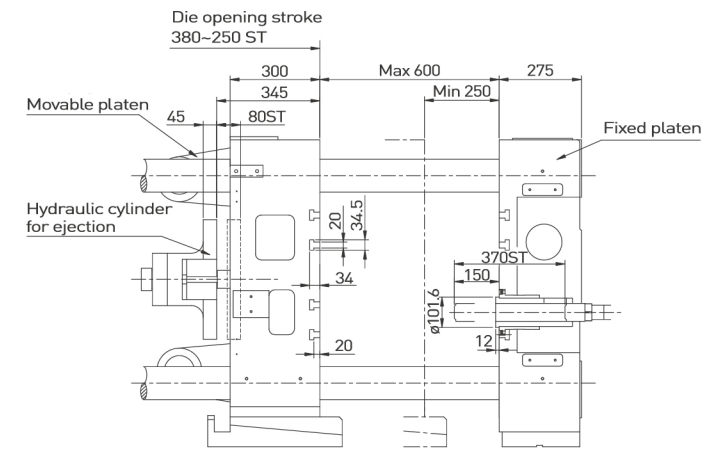
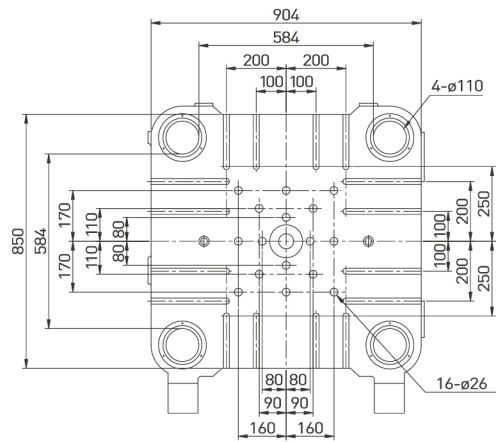
SD-180



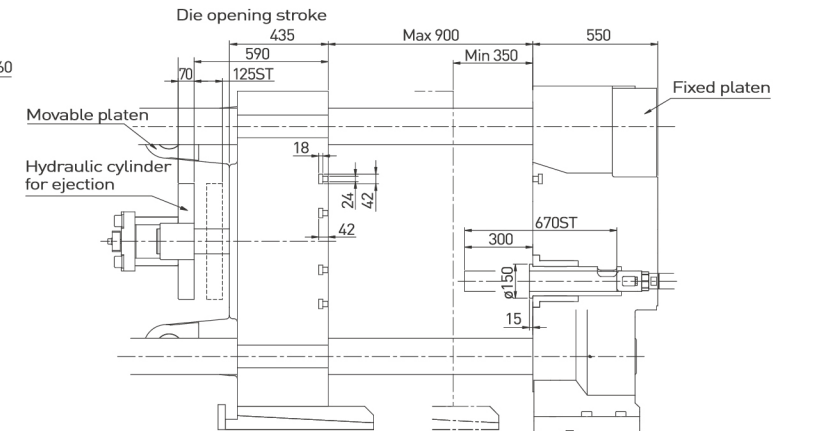
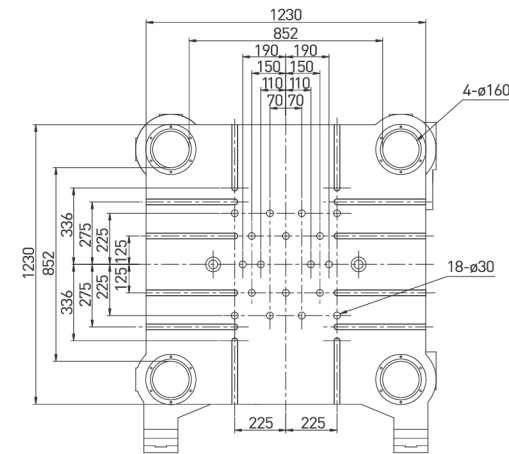
SD-580



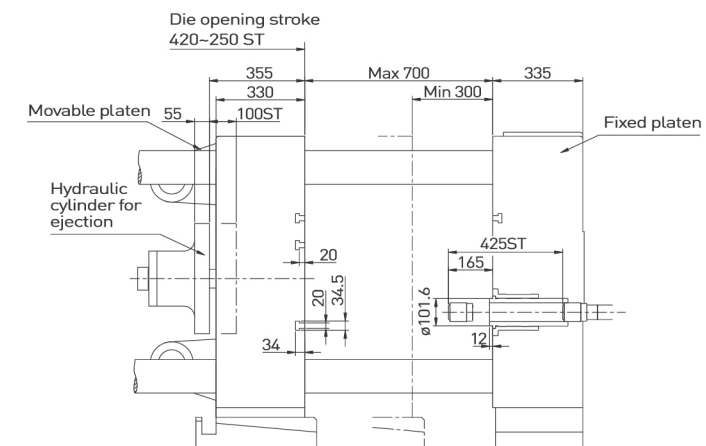
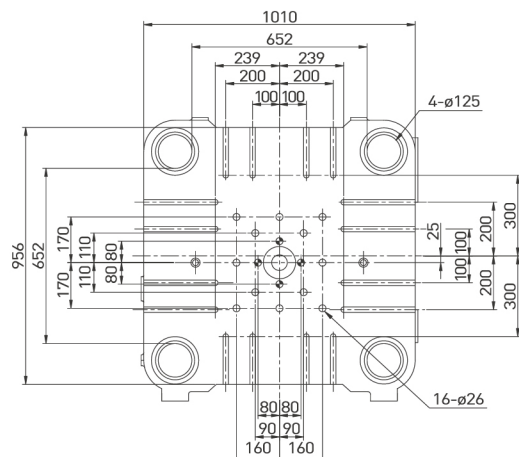
SD-280



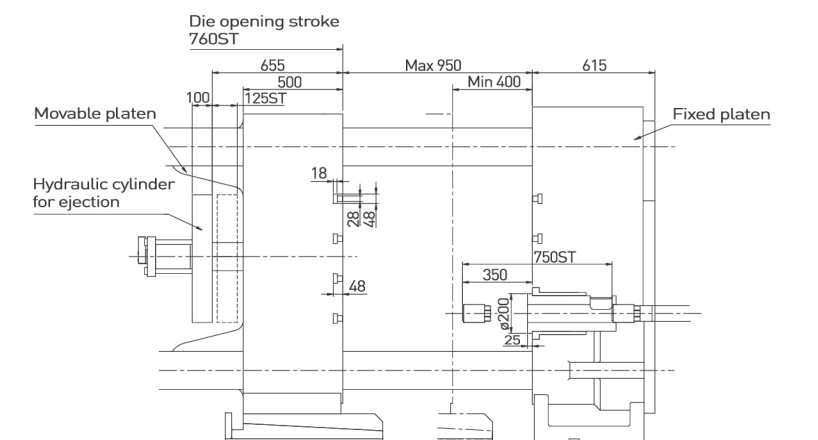
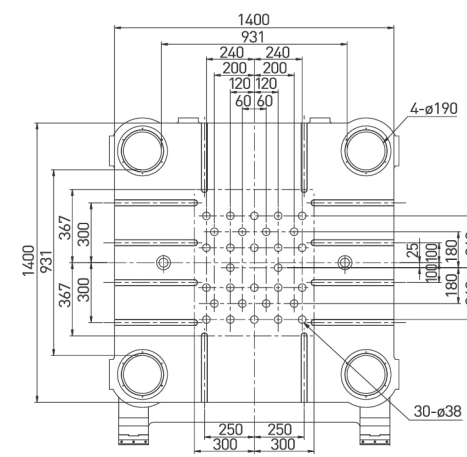
SD-730



SD-420



SD-900



OPTIONAL FEATURES

● : Standard ○ : Optional



ELECTRIC CONTROL

■ **Digital Clamping Force Display:**
Clamping force is displayed on HMI. Upper and lower limit of strain values can be set to protect the machine and molds.

- CH Series CF Series CE Series



ELECTRIC CONTROL

■ **Abandoned Casting Setting (Warm-Up Mode):**
Force the machine to operate certain shots under low-speed injection mode according to shutdown period, avoiding defective castings due to cold molds.

- CH Series CF Series CE Series



ELECTRIC CONTROL

■ **Defective Casting Detector:**
Set pressure upper and lower limits and monitor every injection data by given conditions with strict quality control.

- CH Series CF Series CE Series



ELECTRIC CONTROL

■ **Air-conditioner for Control Panel:**
Effectively removing heat and humidity from the panel.

- CH Series CF Series CE Series



ELECTRIC CONTROL

■ **Automatic Safety Door:**
Operator / Non-operator sided auto safety doors can be controlled by external connection.

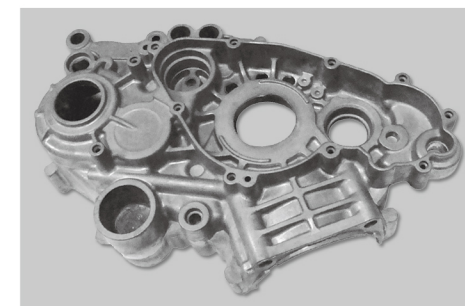
- CH Series CF Series CE Series



ELECTRIC CONTROL

■ **Security Lock System:**
Prevents the machine from unauthorized access or intentional modification.

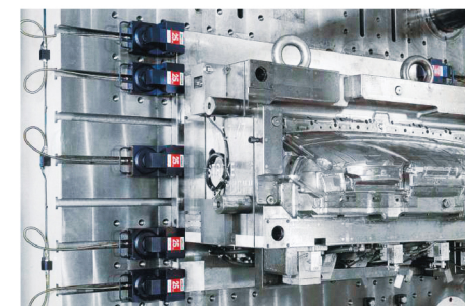
- CH Series CF Series CE Series



ELECTRIC CONTROL

■ **Vacuum System Interface:**
Creates a vacuum in mold cavities by setting parameters to extract air.

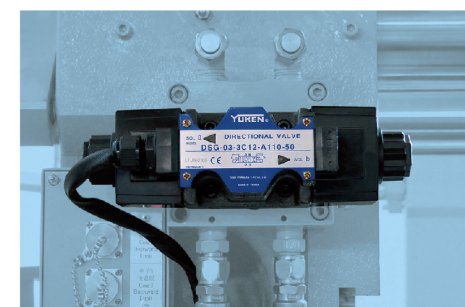
- CH Series CF Series CE Series



MECHANISM

■ **Quick Mold Change System:**
Has the advantage of allowing: quick mold changeovers, high system stability, high space efficiency, and instant troubleshooting if exceptions occur.

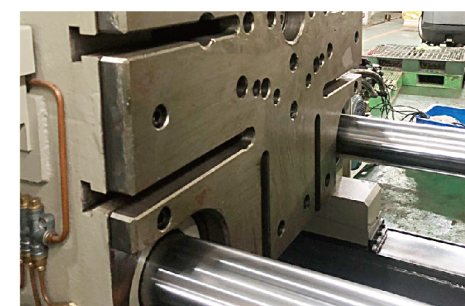
- CH Series CF Series CE Series



MECHANISM

■ **Extra Cores:**
Cores can be added up to 6 according to each machine model.

- CH Series CF Series CE Series



MECHANISM

■ **Movable Platen Reinforcement Board:**
Prevents platens from deformation over long-term use.

- CH Series CF Series CE Series

OPTIONAL FEATURES

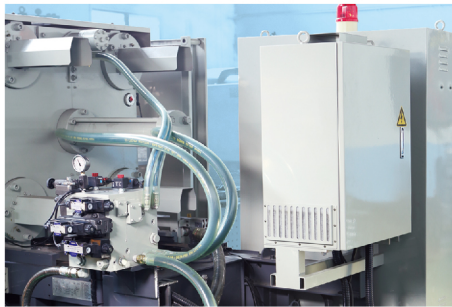
● : Standard ○ : Optional



MECHANISM

- **Auto Tie Bar Puller: 350 ton and above**
Easy to operate and convenient to change particular molds.

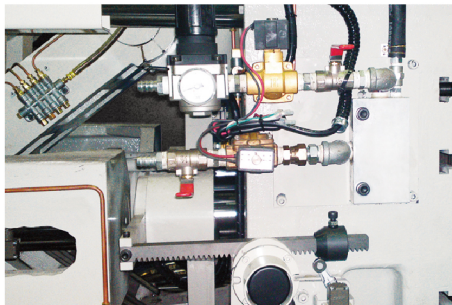
CH Series CF Series CE Series



MECHANISM

- **Energy Saving System:**
Specially designed electric circuit lowers the power consumption by 30%.
Example (in Taiwan):
(350T Model, cycle time 30sec, price of electricity in Summer: 3.5 NTD / kWh)
Without ES system: 12 kW/h, With ES system: 8 kW/h, Cost reduction per month per factory: 20,000
 $4\text{kW} / \text{h} \times 10\text{h} \times 25\text{day} \times 20\text{set} = 20000$

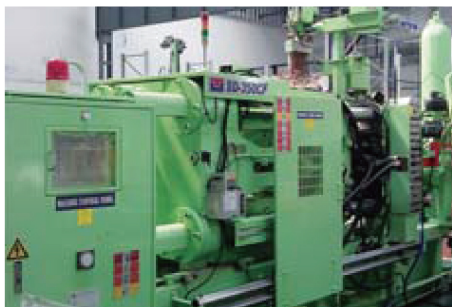
CH Series CF Series CE Series



MECHANISM

- **Fixed Side Spray: 150-350 ton**
Enhancing the spraying process to be more thorough.

CH Series CF Series CE Series



MECHANISM

- **Customized Coloring:**
Machine color can be customized if desired.

CH Series CF Series CE Series



MECHANISM

- **Low Hydraulic Oil Alarm:**
Sends an alarm when oil level is below minimum levels.

CH Series CF Series CE Series

AVXILIARY

Release Agent Dilutor



SF-25B



SF-65A

Features

1. Rate of dilution settings is easy to set, the adjustment range is large, and the concentration is stable.
2. Stainless-steel-made mixing buckets and diaphragm pump provide large flow with stable pressure.
3. Level limit detection designed for the release agent bucket and the mixed diluent bucket.
4. Easy maintenance.

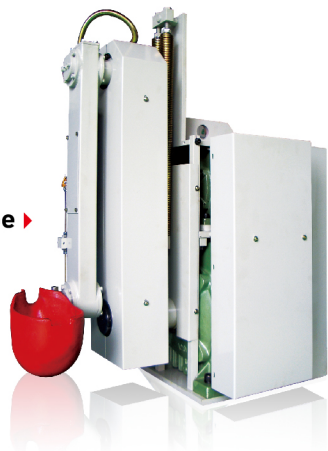
SPECIFICATIONS		SF-25B	SF-65A
Applied to Auto Sprayer	-	SS-15 / 35 (4 sets) SS-65 / 80 (2 sets)	SS-15 (10 sets) SS-35(8 sets) SS-65 / 80 (6 sets)
Dilution Rate	-	50 ~ 416	60 ~ 500
Tank Volume	L	38	200
Maximum Flow Rate of Pump	L / min	159	159 x 2
Air Consumption	L / min	200	200 x 2
Dimension	mm	850 x 600 x 1050	1250 x 900 x 1350
Net Weight	Kg	83	200
		Air Pressure: 5Kg / cm ² Output Pressure: 2-5Kgf / cm ²	Water Input Pressure: 2-3Kg / cm ² Water Temperature: 5°C-40°C

AUXILIARY

GENERAL SPECIFICATIONS - Power Voltage : AC220 / 380V , Operate Voltage : DC24V
 With auxiliaries only, control cabinet is necessary. It can provide an abnormal message alert.
 Easy to use.

Auto Ladler

A Type ▶



FEATURES

- Accurate molten amount supply.
- Inverter driven arms providing smooth and steady movement.
- Easy setting of time and speed.
- Special design of sleeve for long duration under conditions of high temperature and low oil supply.
- Type C is for TBC machines only. Movement is more stable and quicker. More durable.

SPECIFICATIONS		SL-15A / C	SL-35A / C	SL-65A / C	SL-80A / C
Applied D.C.M.	ton	100 ~ 200	250 ~ 420	500 ~ 730	800 ~ 900
Ladle Volume	Kg	0.2 ~ 2.0	0.4 ~ 4.5	4.0 ~ 6.0	4.0 ~ 8.0
Ladle Size	Kg	0.4 / 0.8 / 1.6	1.6 / 2.5 / 3.5	4.0 / 6.0	6.0 / 8.0
Cycle Time	Sec.	12	16	16	18
Min. Crucible Dia.	mm	450	500	650	700
Arm Motor	KW	0.4	0.4	1.5	1.5
Ladle Motor	KW	0.4	0.4	0.75	0.75
Ladle Depth	mm	350	480	550	550
Machine Weight	Kg	229	249	405	398



◀ C Type

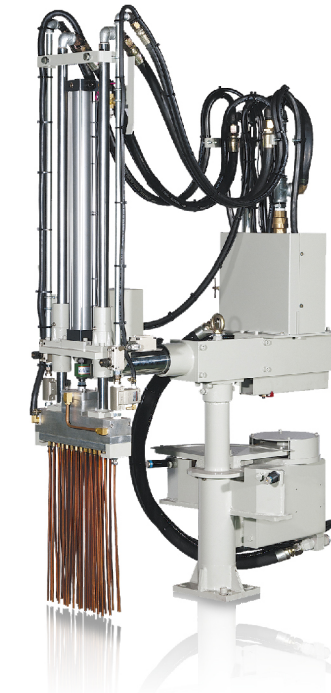
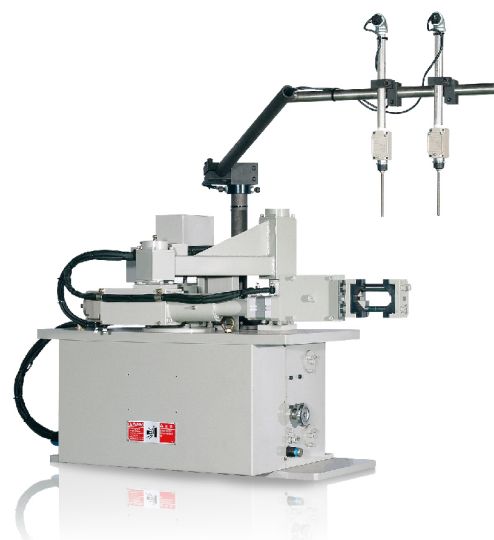
Auto Extractor

FEATURES

- Inverter driven arms providing steady and fast movement.
- Firm grip of castings without vibrating or slipping.
- Water-proof, dust-proof and splash-proof structure design.
- Detecting the number of castings extracted, function available.
- Servo sprayer can be optional, providing more efficient and flexible operation.

SPECIFICATIONS		SE-15C	SE-35C	SE-65C	SE-80C
Applied D.C.M.	ton	100 ~ 200	250 ~ 420	500 ~ 730	800 ~ 900
Extract Stroke	mm	960	1199	1890	2167
Drag Stroke	mm	150	200	300	300
Adjustment For Die Thickness	mm	±100	±100	±100	±100
Clamping Dia.	mm	40 ~ 70	50 ~ 80	70 ~ 95	80 ~ 120
Machine Weight	Kg	233	285	460	530

Clamp Withdraw : 90° Revolve Degree : 90° Air Pressure : 5Kg/cm²



FEATURES

- Unique circuit design for excellent spray atomization.
- Timer and flow valve controlled spray volume which is easy for optimization.
- High flexibility of tubes for directional adjustment. Suitable for any kind of mold.
- Easy tube base substitution and tube numbers adding / removing.
- Equipped with independent pneumatic circuit to dry out the residual release agent.
- Auto-locked upper position limit under condition of pneumatic source stopping.

SPECIFICATIONS		SS-15 / 15BM	SS-35 / 35BM	SS-65 / 65BM	SS-80 / 80BM
Applied D.C.M.	ton	100 ~ 200	250 ~ 420	500 ~ 730	800 ~ 900
Up-down Stroke	mm	600 / 650	700 / 800	900	1000
Adjustment For Die Thickness	mm	180	180	280	300
No. of Spray Tubes		26	40 ~ 50	63	75
No. of Air Tubes		8	8	12	12
Air Consumption	LPM	1400	1500	2500	2500
Lubricant Pressure	Kg/cm ²	3 ~ 5	3 ~ 5	3 ~ 5	3 ~ 5
Machine Weight	Kg	190	200	267	253

Revolve Degree : 90° Air Pressure : 5Kg/cm²

Servo Sprayer

FEATURES

- Contains all the advantages of the normal sprayer.
- Uses servo motor with high durability bearings driving the sprayer allowing fast up/down movements and saving energy.
- Highly efficient spraying with the ability for fine vertical movements.
- Able to reduce usage of release agent by 50~70%.
- Able to shorten the cycle time by 1~5 secs.
- Able to enhance product quality by lowering porosity.
- **Optional for Standard Type / Link Type servo sprayer.**

◀ Standard Type



▶ Link Type

AUXILIARY



Auxiliary

Spraying Robot

- Specialized independent nozzle control for air and release agent. Adjustable for quantity of spraying.
- Able to adapt to hard to reach angles.
- Dust and water resistant.
- Spraying parameter stored and is not required copper tubes.
- Able to extend storage space by USB.
- Reduce labor cost.



Auxiliary

Extracting Robot

- Able to be integrated with casting inserts.
- If combined with stamping press/conveyor, improving production efficiency.
- Able to be integrated with Defective Casting Detector, automatically picking out bad castings.



Auxiliary

Extracting and Spraying (2 in 1) Robot

- Specifically applicable to hot chamber die casting machine.
- Able to adapt to hard to reach angles.
- Fluent movement of spraying and extracting, saving labor cost.

OTHERS DIE CASTING AUXILIARIES



Auxiliary

Vacuum System

- Equipped with HMI, user-friendly, easy to operate.
- Improve density of the casting, decrease surface flow marks and porosity, and increase qualified rate of casting
- Extend the lifespan of die

MODEL	
Applied to D.C.M	800 ton below
Nominal Displacement of Vacuum Pump	63m ³ /Hr(50Hz), 76m ³ /Hr(60Hz)
Nominal Motor Rating of Vacuum Pump(KW)	1.8KW(50Hz),2.2KW(60Hz)
Volume of Tank (L)	150L
Dimension(mm)	1150mm(L)x600mm(W)x1150mm(H)



Auxiliary

Auto Charging System

- Simplifying the process of manual feeding.
- Increasing efficiency of production.
- Able to adjust speed, time, and quantity of distribution.
- Standard for warning light, buzzer, and safety door.

MODEL	SPA-80	SP-50C
Molten Metal	Aluminum	Zink
Max. Speed	45 m/min	45 m/min
Ladle Speed	95 mm/sec	95 mm/sec
Ladle Volume	60KG	50KG
No.ofmachine	12sets	12sets

TOTAL SOLUTION FOR HOT CHAMBER DIE CASTING MACHINE



Extracting and Spraying (2 in 1) Robot

- Fluent movement of spraying and extracting, saving labor cost.



Conveyor



Auto Sprayer / Extractor



Auto Charging System

Customized Coloring



Video: TH-190 + Robot

MODEL & SERIES

HOT CHAMBER DIE CASTING MACHINE / 75 / 130 / 190 / 250 ton



HIGH QUALITY MACHINES TO SATISFY YOUR DIE CASTING NEEDS

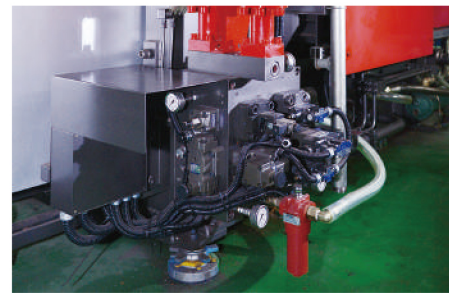
Rigid & Durable, Steady Mechanism Design.
User Friendly Interface, Easy to operate.

OVER 30 YEARS OF EXPERIENCE WITH DIE-CASTING MACHINES

We have over 30 years of R&D experience in the cold-chamber die-casting machine industry. Enabling us to produce easy-to-use, robust and stable hot-chamber die-casting machines.

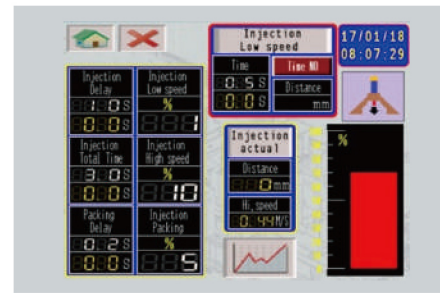


INJECTION SYSTEM



- Controlled by Proportional solenoid valve
- Excellent injection intensity.
- Precise control to enhance component quality.

INJECTION SYSTEM



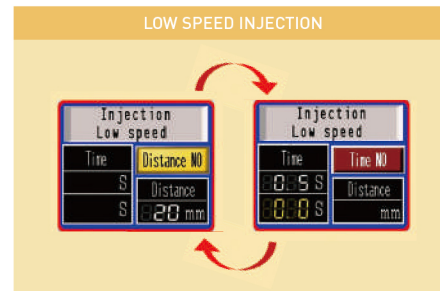
- Three-phase injection mechanism
- Provides low, high speeds and pressure retention.
- Enhanced air-tightness during pressure retention period.

PLATEN SYSTEM

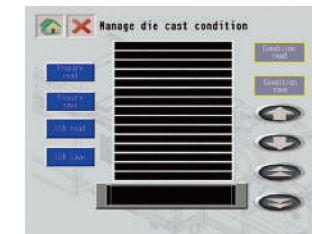


- Proportional Solenoid Valve
- Smooth die close / open.
- Short die close / open cycle.

TWO MODES IN LOW SPEED CONTROL

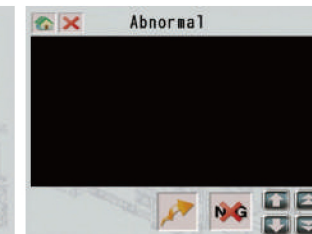


- Freely switch between time / distance in low speed injection modes.
- Effectively control the pressure and speed of injection with measured values provided.



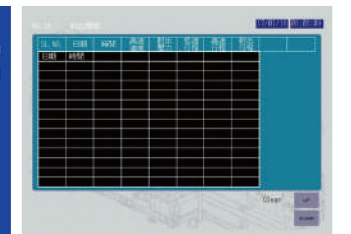
MAINTENANCE & MANAGEMENT

- Data Management
- Up to 250 sets of casting conditions able to be stored.
- Enhance management efficiency.
- Error message display
- Abnormal message alerts for quick troubleshooting.



COMPLETE INJECTION DATA DISPLAY

- Three curves displayed in the figure: Pressure, Distance and Time.
- Injection data will be displayed on the screen for further usage.

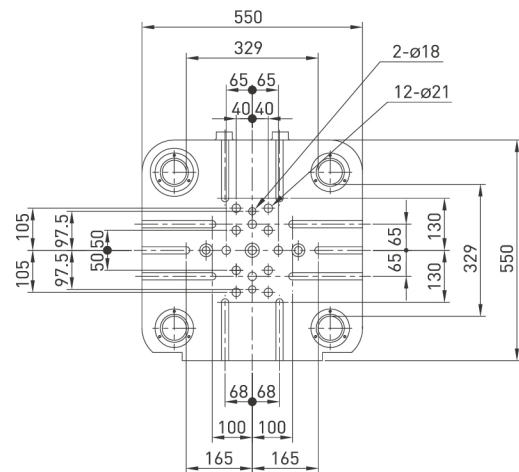




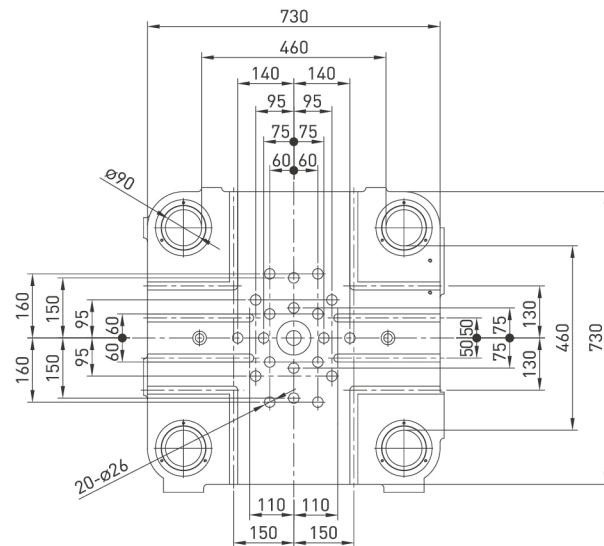
TBC Hot chamber die casting machine video link.

PLATEN LAYOUT

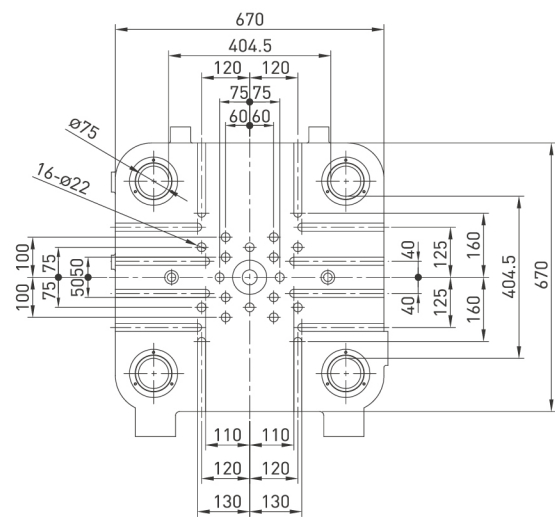
TH-75



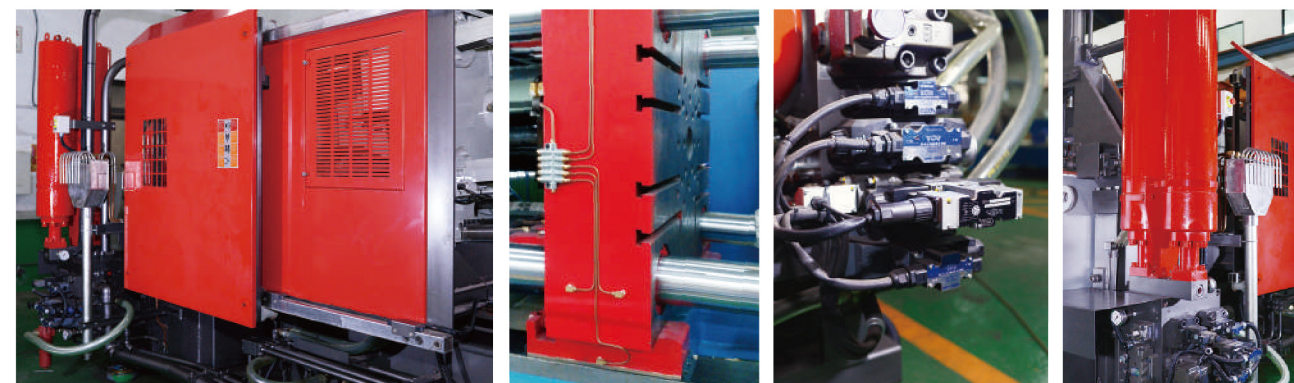
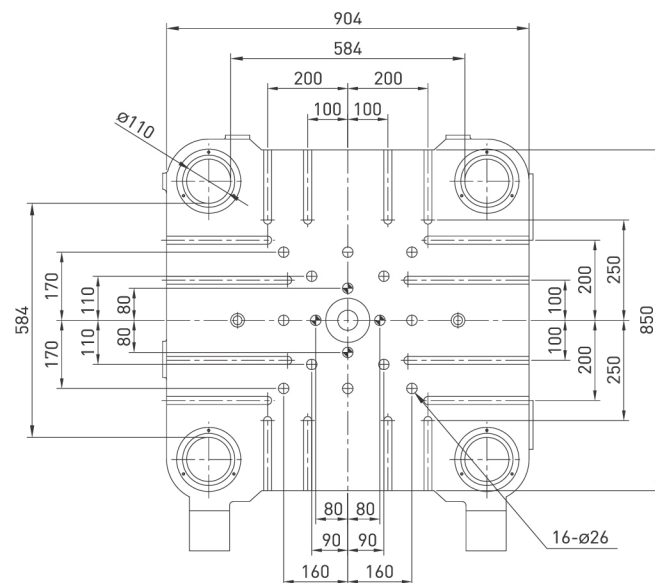
TH-130



TH-190



TH-250



MACHINE SPECIFICATIONS

MODEL	UNIT	TH-75	TH-130	TH-190	TH-250
PLATEN PART					
Die Clamping Force	ton	75	130	190	250
Tie Bar Diameter	mm	60	75	90	110
Die Platen Dimensions (HxV)	mm	550 x 550	640 x 640	730 x 730	850 x 904
Space between Tie bars	mm	329 x 329	400 x 400	460 x 460	584 x 584
Die Stroke	mm	210	310	350	380
Die Thickness	mm	120~400	140~480	150~500	200~600
Nozzle Matching Force	ton	5.1	6.0	7.5	13.0
Nozzle Stroke	mm	200	200	200	250
INJECTION PART					
Injection Cylinder Diameter	mm	80	100	120	120
Maximum Injection Force	ton	5	7.85	10	12.5
Maximum Injection Stroke	mm	125	190	190	200
Injector Rod Diameter (Standard)	mm	50	60	65	75
Actual Shot Weight (Zinc)	g	1200	2500	3000	4500
Furnace Capacity (Zinc)	kg	260	500	500	700
Injection Position	mm	0, 60	0, 80	0, -100	0, -150
Maximum Casting Area	cm ²	253	494	615	929
Casting pressure	kg/cm ²	256	200	238	269
EJECTION PART					
Ejection Force	ton	5	6	7.5	10.5
Ejection Stroke	mm	70	70	80	100
HYDRAULIC PART					
Operating Pressure	kg/cm ²	110	110	110	125
Accumulator (HYDAC) N2 (Injection)	l/ea	20 x 1	20 x 2	20 x 2	32 x 2
Accumulator (HYDAC) N2 (Die close)	l/ea	10 x 1	20 x 1	32 x 1	50 x 2
Oil Tank Capacity	l	200	400	600	800
ELECTRICAL PART					
Electrical Motor	kw	11.0	15.0	18.5	30.0
MACHINE SIZE					
Machine Weight	ton	5	7.5	10.5	14.7
Machine Size	m	4.2x2.0x1.8	4.3x2.2x2.3	4.8x2.1x2.5	5.5x2.2x2.6

Option	
Auto Safety Door	Auto Hydraulic Injection Position Adjustment.
Electric Heater for Shot Sleeve	Extracting and Spraying (2 in 1) Robot
Nozzle -Type Sprayer	Electric Melting Furnace
Auto Extractor	Conveir

TBC reserves the right for adjustment of data. Specifications & contents are subject to change without further notice. All photos and contents are copyrighted by TBC.



TECHNOLOGY BASE CORPORATION

No.21, Heye 1st Road., Ho Fa Industrial Park, Daliao District, Kaohsiung City 83164, Taiwan
T. +886-7-7873627~8
F. +886-7-7872262
info@tbc-diecast.com

T.B.C MACHINERY (DONGGUAN) CO., LTD

Building 1 ,No. 7,Pulong West First Road,Tangxia,Dongguan ,Guandong, China
T. +86-769-82129197
F. +86-769-82129173
techbase@163.com



OVERSEA SERVICE SPOT

China : Fujian, Xiamen, Jiangsu, Kunshan, Ningbo
India : Delhi, Pune, Coimbatore, Chennai
Indonesia : Jakarta, Surabaya
Vietnam : Ho Chi Minh City, Hanoi
South Korea : Seoul
Malaysia: Kuala Lumpur
Thailand: Bangkok
Pakistan: Karachi

TBC reserves the authorization for modification.
Specifications & contents are subject to change without further notice.
Copyright of all photos, contents are belong to TBC.